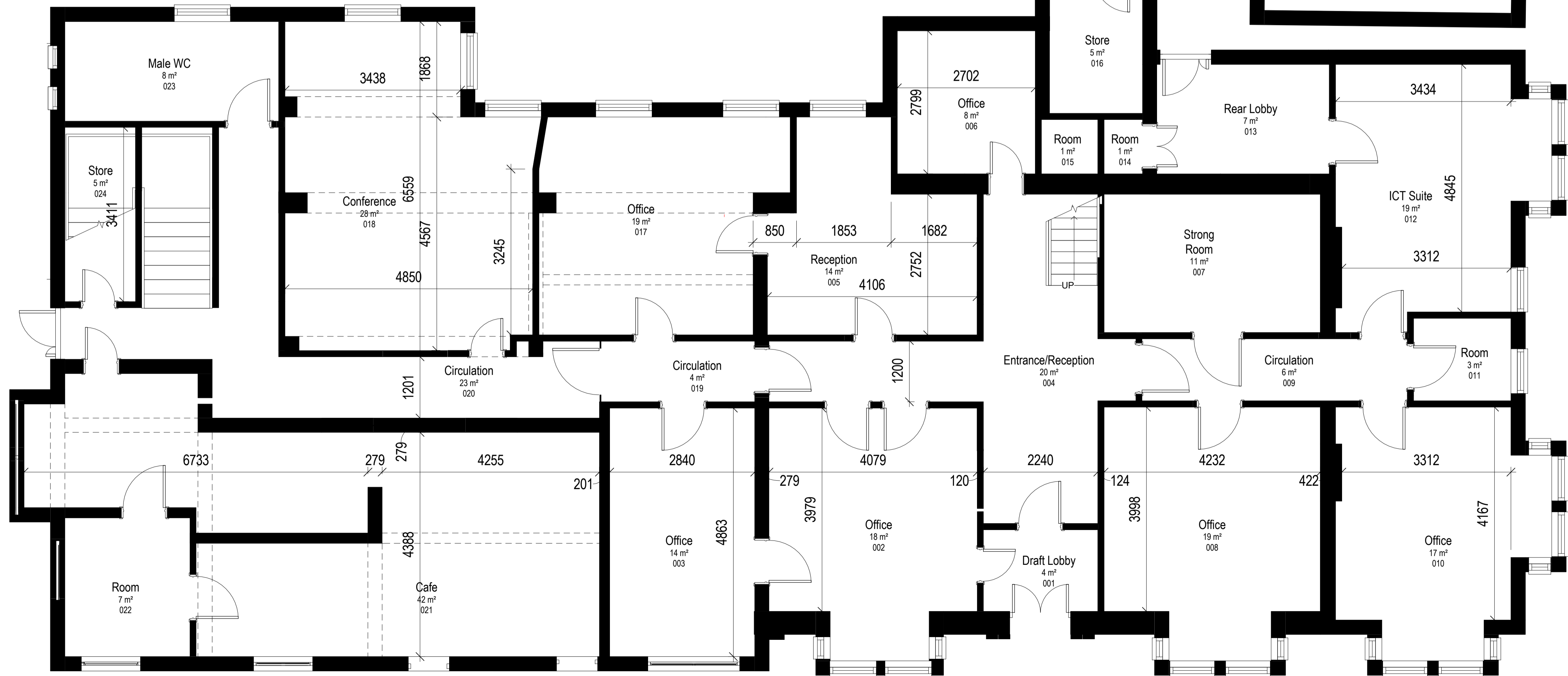
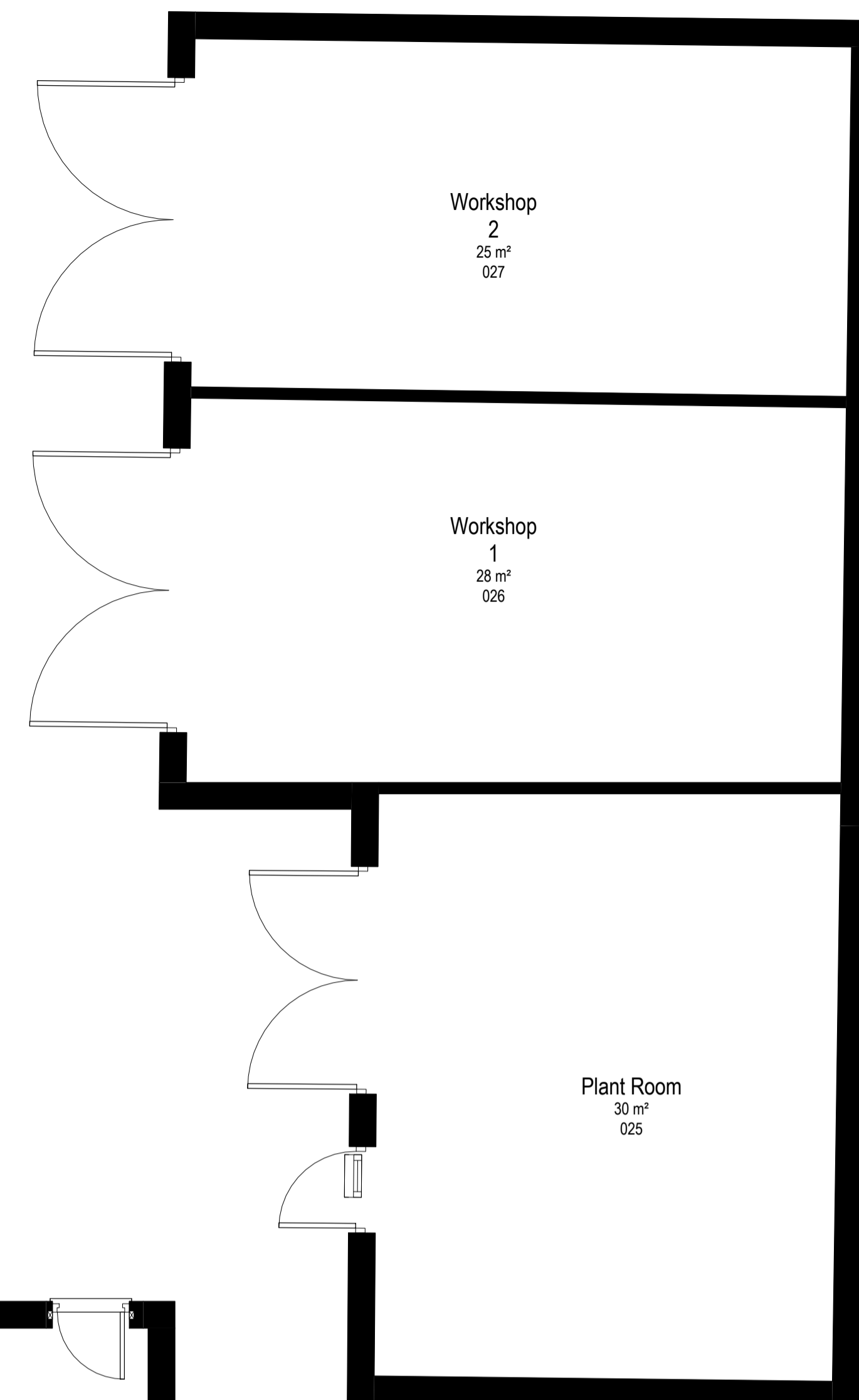


ASCH007 - Room Area Schedule Existing Ground Floor			
Level	Number	Name	Area
Level 00			
Level 00	001	Draft Lobby	4 m ²
Level 00	002	Office	16 m ²
Level 00	003	Office	14 m ²
Level 00	004	Entrance/Reception	20 m ²
Level 00	005	Reception	14 m ²
Level 00	006	Office	8 m ²
Level 00	007	Strong Room	11 m ²
Level 00	008	Office	19 m ²
Level 00	009	Circulation	6 m ²
Level 00	010	Office	17 m ²
Level 00	011	Room	3 m ²
Level 00	012	ICT Suite	19 m ²
Level 00	013	Rear Lobby	7 m ²
Level 00	014	Room	1 m ²
Level 00	015	Room	1 m ²
Level 00	016	Store	5 m ²
Level 00	017	Office	19 m ²
Level 00	018	Conference	28 m ²
Level 00	019	Circulation	4 m ²
Level 00	020	Circulation	23 m ²
Level 00	021	Cafe	42 m ²
Level 00	022	Room	7 m ²
Level 00	023	Male WC	8 m ²
Level 00	024	Store	5 m ²
Level 00	025	Plant Room	30 m ²
Level 00	026	Workshop 1	28 m ²
Level 00	027	Workshop 2	25 m ²
Level 00: 27			
Grand total: 27			385 m ²



Notes:
NOTE:
 The information on this drawing is based on incomplete information and assumptions. A professional survey is required to ascertain dimension of existing areas and elements and location and nature of partitions, windows and doors.

CO-ORDINATION NOTE:
 The information on this drawing is still subject to the final co-ordination of structure / sub-structure, M&E, FF&E and kitchen design and to review with the Building Control Body and the Fire Specialists.
 It is also subject to more detailed information to be provided by means of specialist surveys, to depict a better picture of the existing and the works required. Results are awaited from the following surveys:
 - building condition survey
 - measured survey
 - intrusive structural survey
 - damp survey
 - asbestos survey
 - drainage CCTV
 Refer to Architect's schedule of works and specifications for more details regarding the works on the individual elements.
 Refer to M&E engineer for works on existing services and installation of new mechanical and electrical fixtures.



Amendments

No.	Description	Date	Issued by
2	Issued for tender	22/03/2021	GM
1	Issued for information	10/03/2021	GM

Use figured dimensions only. All levels and dimensions to be checked on site. This drawing is to be read in conjunction with all other relevant drawings and specifications.
 © Novium Limited. All rights reserved.

NOVIUM ARCHITECTS

Corn Exchange
 Baffins Lane
 Chichester
 PO19 1BF
 T 01243 558750
 info@novium.com
 www.novium.com

Project Name:
Masters House

Dwg Reference:
Existing Ground Floor GA Plan

Drawn: GM Checked: Checker
 Scale: 1 : 50 @ A1 Project Issue Date: March 2021

Project:	Originator:	Volume:	Level:	Type:	Role:	Number:
Z0513	NOV	V1	00	DR	A	03000

Status: **S3** Suitability Description: **Information** Orig Paper Size: **A1**
 Revision: **P0.2** Revision Description: **INFORMATION** Novium Job No: **Z0513**